

Thank you for choosing the RELICT vaporizer! Before using the device for the first time, please read and follow the instructions below carefully. Please do not use the RELICT Vaporizer unless you fully understand the instructions below.

If any questions remain after reading the instructions for use, please contact your specialist dealer.

Please note that the manufacturer and importer accept no responsibility for any damage resulting from failure to observe the following instructions.

We recommend that you keep these operating instructions in a safe place so that you can access them at any time later.

We hope you enjoy the quality and performance of your new RELICT vaporizer.

GENERAL SAFETY INSTRUCTIONS

You must be at least 18 years of age to purchase or use the RELICT Vaporizer. This device must not be used by children or adolescents and must be kept away from them. Also, make sure that children do not come into contact with the packaging elements of the device, as they may pose a potential hazard. Pregnant or lactating women, as well as persons with life-threatening medical conditions, chronic respiratory diseases, or known allergies should never use the device without first consulting a physician.

THIS DEVICE DOES NOT CONTAIN TOBACCO OR CONCENTRATE MATERIALS.

The RELICT Vaporizer is intended for dry herb inhalation only. Any other use is not permitted. Specifically, the RELICT Vaporizer is not intended to be used to inhale tobacco or other substances containing nicotine.

The RELICT Vaporizer must also not be used to inhale illegal substances. With regard to the herbs you wish to inhale, please always check the current legislation before use. If you use the RELICT Vaporizer to inhale illegal substances, you may be subject to heavy fines or imprisonment. To ensure that you are consuming legal herbs, we recommend that you only purchase them from pharmacies.

OVERVIEW

The RELICT Vaporizer is not intended for the administration of medical substances of any kind. The RELICT Vaporizer is not a medical device and is not intended to diagnose, cure, treat, or prevent any disease or other health condition intended. If you have any health problems, consult your physician before use.

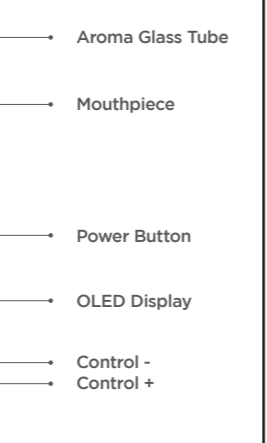
Always refer servicing and repair of the RELICT Vaporizer to qualified service personnel. Do not continue to use the device if it is damaged. Never drop the device, as its electronics may be damaged by the impact. If you do accidentally drop the device, have it checked for proper operation by qualified personnel. Always place the device at ground level to prevent it from tipping over and becoming damaged.

Keep the device away from water and moisture: you could get an electric shock or damage the device or the battery.

Do not use accessories that have not been approved for use with the RELICT Vaporizer by the manufacturer. You could damage the device by using third-party accessories.

Never leave the device unattended while charging, during use or while cooling down.

Make sure that the ventilation slots or air outlet are never covered or blocked.



SCOPE OF DELIVERY

- 1pc. NORDDAMPF Relict Vaporizer
- 1 pc. USB-C Cable
- 1 pc. 45mm Black Aroma Glastube
- 2 pcs. Dosing Capsule
- 2 pcs. Screens
- 1 pc. Packing Tool
- 1 pc. Cleaning Brush
- 2 pcs. Cleaning Wipes
- 1 pc. English Manual
- 1 pc. German Manual
- 1 pc. NORDDAMPF Sticker

SPECIFICATION

OLED DISPLAY

Norddampf RELICT vaporizes OLED display indicates temperature information, battery status and session timer.

SPEC

| | |
|--------------------------|--|
| Size | 30.5mm*30mm*124.1mm |
| Battery Capacity | 2300mAh |
| Charging Voltage/Current | 5V/2A |
| Lock/Unlock | Press power button 5 times consecutively |
| Session Time | 3-6 Minutes adjustable |
| Temperature Range | 320-464 °F (160-240°C) |
| Charging Time | <2 hours |

WARNING: Always store RELICT vaporizer in a dry place to protect the battery against the effects of weather.

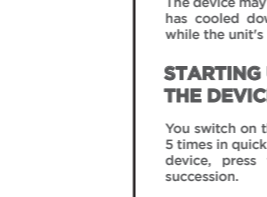
KEEP OUT OF REACH OF CHILDREN AND/OR UNQUALIFIED PERSONS.

HOW TO LOAD

The device may only be filled when it is switched off and has cooled down. Filling must also never take place while the unit's battery is charging.

STARTING UP AND SWITCHING OFF THE DEVICE

You switch on the device by pressing the power button 5 times in quick succession. If you want to switch off the device, press the power button 5 times in quick succession.



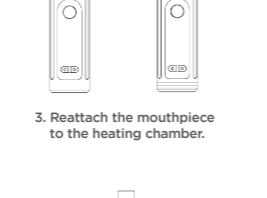
3. Reattach the mouthpiece to the heating chamber.



4. Press power button rapidly 5x to turn on.

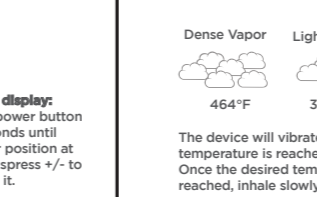
HOW TO SET

When device turn on, it will display the current temperature. Temperature display default to Fahrenheit, cursor position at SET, simply press +/- to adjust temperature.



Celsius display: Press and hold the power button and "+" for 3 seconds to switch.

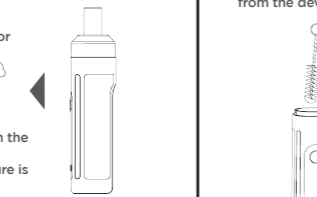
Timer display: Hold power button 3 seconds until cursor position at timer, press +/- to adjust it.



• If your airways are irritated by high steam intensity, it is necessary to lower the temperature.

HOW TO CLEAN

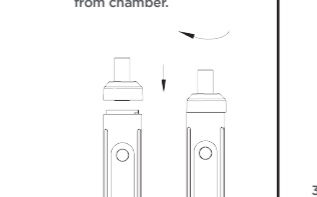
You must clean the device regularly to prevent damage caused by residues. We recommend performing a brief cleaning after each use of the device. Always make sure that the device is switched off, completely cooled down and not connected to the mains for charging when cleaning. Always make sure that all electronic components of the device remain dry when cleaning.



3. Use the cleaning brush to remove the remaining residue from chamber.

HOW TO REPLACE SCREENS AND AROMA TUBE

1. Remove the mouthpiece from the device.




3. Pull off screen from silicon holder and replace it.

HOW TO CHARGE

• Quick battery check: briefly press the power button when device is off, the icon and screen will show remaining battery level.

• Battery capacity: 2300mAh, regular USB-C charging, 5V/2.0A suggested.

• Initially charge the RELICT for 2 hours. The battery will stop charging when the icon  is full.

• When battery level is low, charge the device with included USB-C cable to compatible wall charger. Low battery level will be indicated with icon .

• The battery of the device must be fully charged before using it for the first time. The device must not be used during the charging process. Please stay away during permanently present during the charging process.

• Always ensure that the USB cable is exposed and not bent during charging.

• Always make sure that the device is at room temperature before connecting it to the mains. Failure to do so may result in damage to the device. Also ensure that the power source is in adequate condition and not contaminated.



USB-C Cable to Device